



&



S.No. 97, Mhaske Vasti, Nigdi Kiwale BRTS, Ravet, Pune - 412 101

M: +91 95527 38000 / 95527 48000 | E: sales@sonigarapresidency.com | www.sonigarapresidency.com



MAHA-RERA Regn. No.: P52100019628 | Available at www.maharera.mahaonline.gov.in

Sonigara Presidency is a project developed by and belonging to Sonigara & Bhosale Associates

Disclaimer: The contents/ pictures/ images/ renderings/ maps are purely indicative in nature and are artist's conception and not actual depiction of the buildings/ landscapes etc. and shall not be considered as our offer/ promise/ commitment of any nature in respect of the project. The common areas that have been shown in any form whatsoever is/are for the entire building or phase of the Project and that the common areas will not be available on completion of the first phase of the Project or later phases. The common areas shall be available for the entire building and will be developed in a Phase-wise manner, over a period of time and will be completed and handed over after all phases are completed and we have no objection for the same. You are requested to contact our Sales Team to understand the current details regarding the project and only after thorough understanding about the same, make a decision to book the apartment/s in the project.

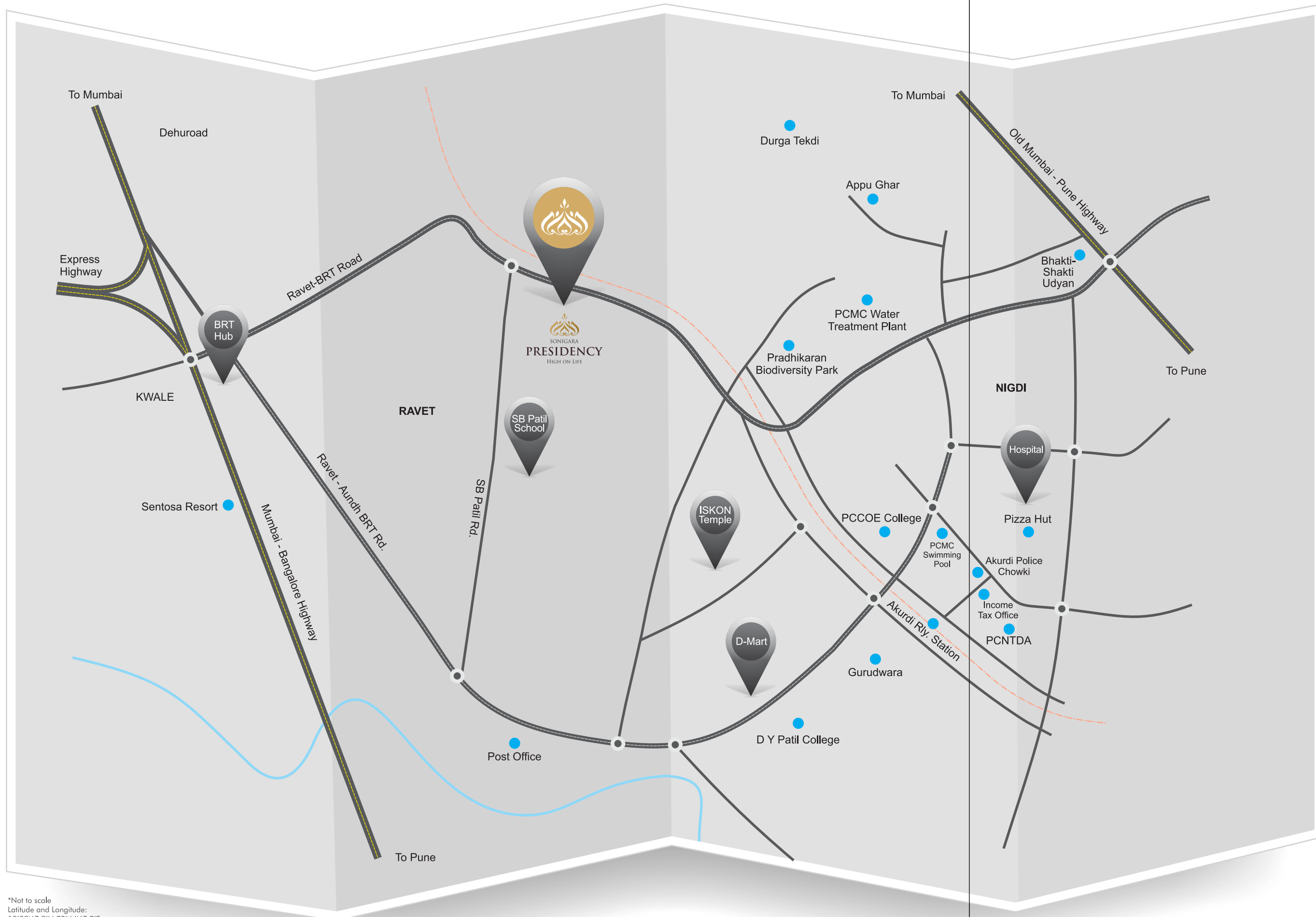


SONIGARA
PRESIDENCY
HIGH ON LIFE



A GREAT SETTING TO NOT JUST LIVE BUT THRIVE

Ravet - a fast developing cityscape which is not only strategically advantageous but also well-connected from all sides. Offering you the best of both the worlds- connectivity and cozyness, Ravet is a union point of the old NH4, the Katraj-Dehu Road bypass and the Pune-Mumbai Expressway. It provides myriad possibilities, such as proximity to Hinjewadi IT Hub, closeness to Talegaon MIDC and Chakan MIDC, easy access to major hospitals, schools and colleges. Come and not just live but thrive at Sonigara Presidency.



UNMATCHED COMFORT. UNRIVALLED CONNECTIVITY.

The project is located in an ever-buzzing location with well connected routes to prominent destinations of the city. The strategic location offers you an unrivalled edge over other location due to its proximity to the corporate zones, schools and entertainment hubs. Live more and celebrate more in a well-connected location of Ravet.



*Not to scale
Latitude and Longitude:
18°39'47.9"N 73°44'47.2"E
*A creative conceptualization for presentation purpose only



LIFE ELEVATED. LUXURY REIMAGINED.

One of the biggest projects from the house of Sonigara Homes, Sonigara Presidency is a grand creation spread across sprawling 3.5 acres. With 4 exclusive 15 storey towers having a collection of ultra-modern 1 & 2 BHK homes, it is an abode that celebrates luxury to the fullest. Brilliant interiors and excellent exteriors, contemporary architecture and maximum space optimization, all these elements come together to make it an avant-garde project.



HIGH ON LIFE.
HIGHER ON COMFORT.





LIVE EFFICIENT. LIVE MAXIMUM.

Do more in less space. At Sonigara Presidency, we have made sure that every space is utilized to its maximum potential with excellent architectural planning and design of space for a great dwelling experience. Cozy and modest floor plans with maximum space utilization make every home, a comfortable abode for years to come.



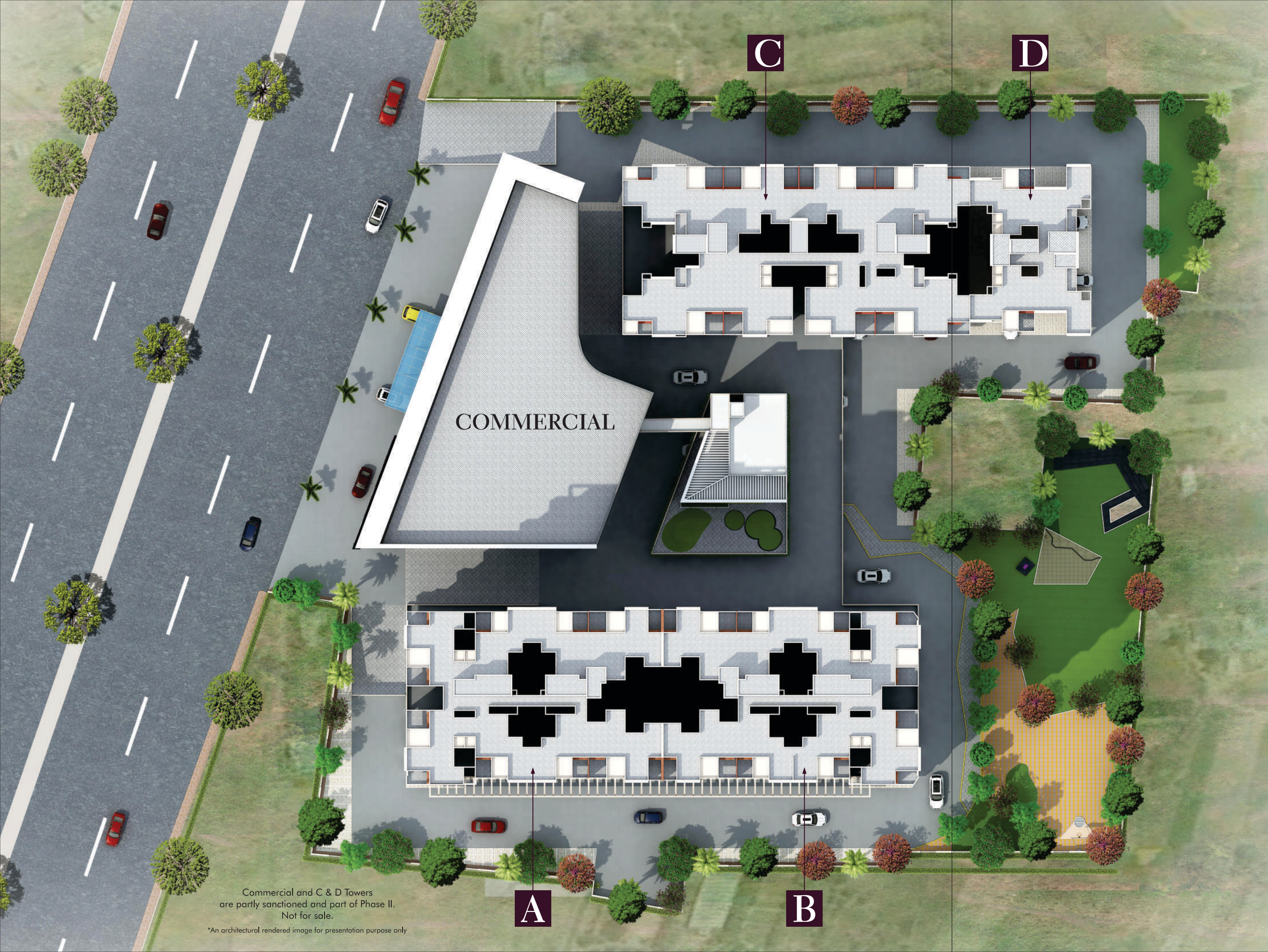
MAXIMUM LIVING. UPSCALE DWELLING.

Sonigara Presidency is an abode made for every member of your family. It is a home that offers unmatched comfort for everybody alike. Grand entrance lobby, party lawn, kids' space, swimming pool, and much more, what more does a modern family needs for an upscale life. Come and rejoice in a pure exuberant lifestyle.



C & D Towers
are partly sanctioned
and part of Phase II.
Not for sale.

*An architectural rendered image for presentation purpose only



Commercial and C & D Towers
are partly sanctioned and part of Phase II.
Not for sale.

*An architectural rendered image for presentation purpose only

AMENITIES

- Club House
- Party Lawn
- Gymnasium
- Multipurpose Hall
- Children's Play Area With Equipments
- Grand Entrance Gate With A Security Cabin
- Attractive Entrance Lobby
- Senior Citizen Sitting Area
- Half Basketball Court
- Table Tennis, Carom, Chess Table
- Three Automatic Lifts For Each Building With Generator Back Up
- Internal Concrete Roads
- Convenience Shopping
- CCTV Cameras For Safety On The Main Entrance
- Generator Back Up For Common Areas & Lifts
- Rain Water Harvesting System
- Fire Fighting System
- Garbage Chute

SPECIFICATIONS

STRUCTURE

- RCC frame structure
- 125mm thick Internal and external walls
- Gypsum finished plaster for internal walls

KITCHEN

- Kitchen platform with granite top
- Stainless steel sink
- Designer glazed dado tiles up to lintel level in kitchen
- Water purifier
- Provision for exhaust fan
- Concealed plumbing in kitchen

ELECTRICAL

- Concealed copper wiring with standard quality fittings, fixtures and MCB
- Concealed FRLS - fire resistant low smoke cable
- Modular switches
- Ample light points
- AC point in master bedrooms
- Provision for centralized cabling system for DTH and telephones
- Common areas will be illuminated with sufficient lighting as per requirement
- Provision for inverter

INTERNAL FINISH

- Pleasing shade of emulsion paint

EXTERNAL FINISH

- External sand faced plaster with acrylic paint

WINDOWS

- Three track powder coated aluminium windows with sliding glass shutters, mosquito net
- M. S. safety grills
- Marble/granite window sill

- Powder coated aluminium sliding doors for living terrace
- Aluminium adjustable louvered ventilators for toilets

FLOORING

- 24" X 24" Vitrified tile flooring with skirting in living / dining area, all bedrooms, kitchen and passage
- Ceramic tiles for terrace and toilet

SPECIAL FEATURES

- Decorative entrance lobby with name board and letter box

DOORS

- Laminated entrance door with safety lock/mortise lock and nameplate
- Premium quality fittings for main door
- Wooden door frame with laminated flush door for internal room

PAINT

- Internal paint - pleasing shade of emulsion paint
- External paint -
 - a) Sand faced plaster
 - b) Attractive elevation
 - c) Superior quality paint for external walls

TOILET

- Standard quality chromium plated bathroom fitting and fixtures
- Marbles/granite door frames for toilets
- Designer glazed dado tiles in toilets up to lintel level
- Provision for Exhaust fan in all bathrooms



C & D Towers
are partly sanctioned
and part of Phase II.
Not for sale.

1 BHK



- 1. LIVING - 4.35X2.22 (14'3"X7'3"), 2.10X0.98 (6'11"X3'3"), ENC.BAL. 2.25X1.13 (7'5"X3'9")
- 2. TERRACE - 2.10X2.75 (6'11"X9'0")
- 3. KITCHEN - 2.55X2.45 (8'4"X8'0")
- 4. TERR. - 1.20X1.48 (3'11"X4'10")
- 5. TOILET - 1.85X1.20 (6'1"X3'11")
- 6. TOILET - 1.85X1.20 (6'1"X3'11")
- 7. STUDYROOM - 3.20X1.55 (10'6"X5'1"), ENC.BAL. - 3.42X1.65 (11'3"X5'5")

*An architectural 3D rendered image for presentation purpose only. The furniture, tiles, colour, accessories and other appliances are shown for presentation purpose only and are not included in agreement.

2 BHK

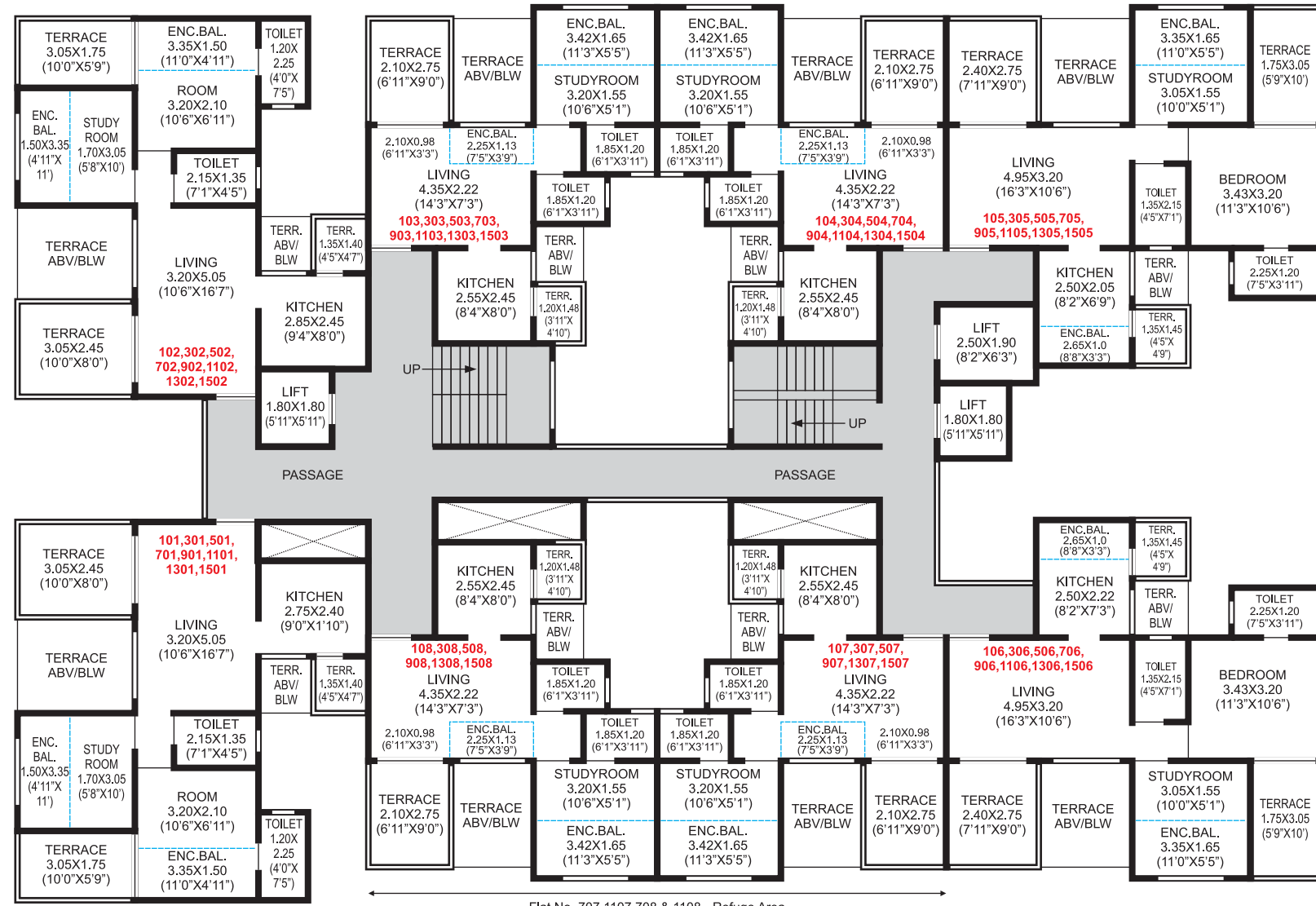


- 1. LIVING - 4.95X3.20 (16'3"X10'6"),
- 2. TERRACE - 2.40X2.75 (7'11"X9'0")
- 3. KITCHEN - 2.50X2.22 (8'2"X7'3") ENC.BAL. 2.65X1.0 (8'8"X3'3")
- 4. TERR. - 1.35X1.45 (4'5"X4'9")
- 5. TOILET - 1.35X2.15 (4'5"X7'1")
- 6. TOILET - 2.25X1.20 (7'5"X3'11")
- 7. BEDROOM - 3.43X3.20 (11'3"X10'6")
- 8. TERRACE - 1.75X3.05 (5'9"X10')
- 9. STUDYROOM - 3.05X1.55 (10'0"X5'1") ENC.BAL. - 3.35X1.65 (11'0"X5'5")

*An architectural 3D rendered image for presentation purpose only. The furniture, tiles, colour, accessories and other appliances are shown for presentation purpose only and are not included in agreement.

WING A:

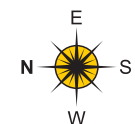
1st, 3rd, 5th, 7th, 9th, 11th, 13th & 15th FLOOR PLAN



Flat No. 707,1107,708 & 1108 - Refuge Area

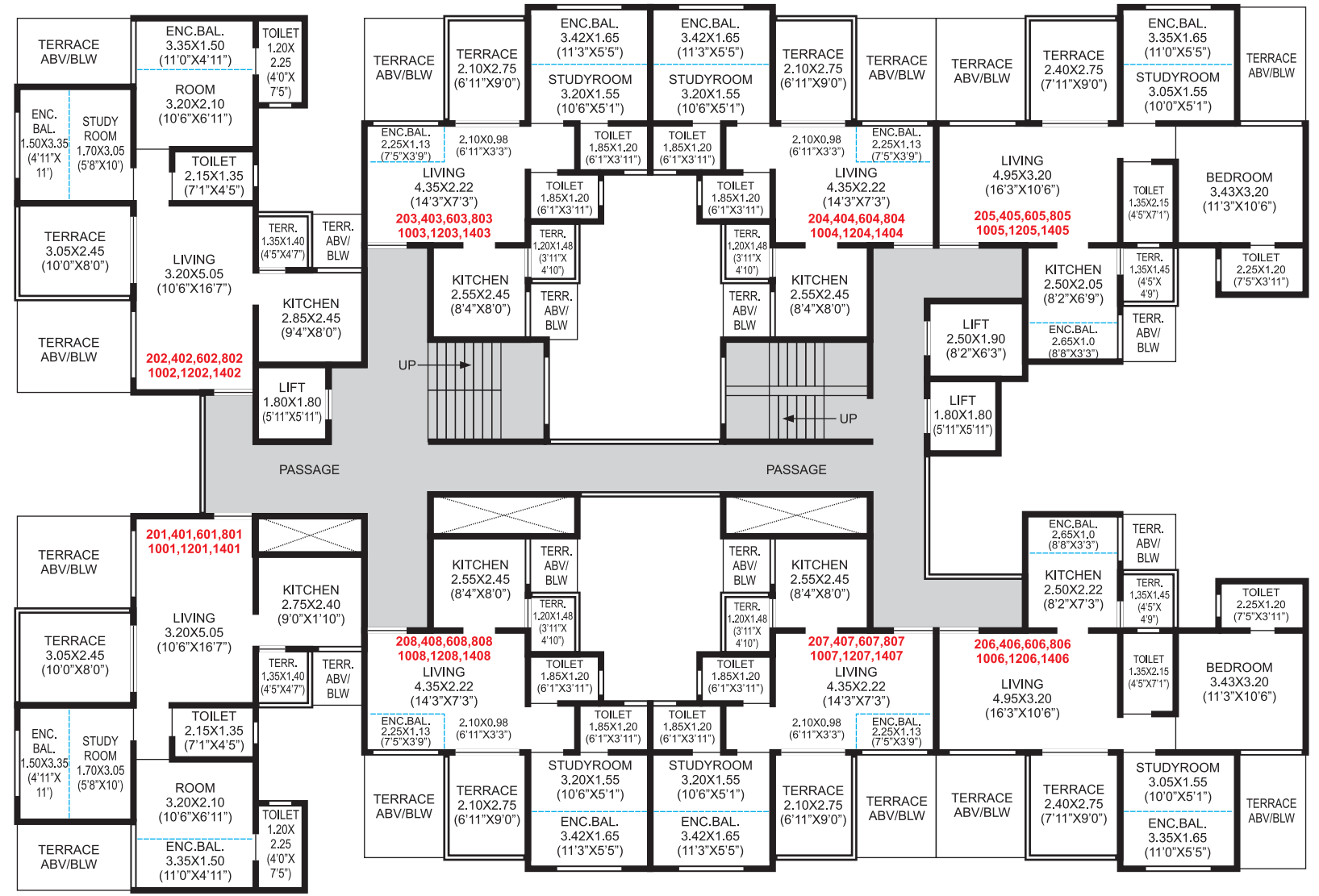
AREA STATEMENT IN SQ.M

| FLAT NO. | TYPE | CARPET | OPEN TERR. & SERVICE AREA | BALCONIES & VERANDHA |
|------------------------------------|------|--------|---------------------------|----------------------|
| 101,301,501,701,901,1101,1301,1501 | 2BHK | 45.23 | 14.68 | 8.7 |
| 102,302,502,702,902,1102,1302,1502 | 2BHK | 45.23 | 14.68 | 8.7 |
| 103,303,503,703,903,1103,1303,1503 | 1BHK | 31.19 | 7.54 | 7.54 |
| 104,304,504,704,904,1104,1304,1504 | 1BHK | 31.19 | 7.54 | 7.54 |
| 105,305,505,705,905,1105,1305,1505 | 2BHK | 46.89 | 13.87 | 7.34 |
| 106,306,506,706,906,1106,1306,1506 | 2BHK | 47.29 | 13.87 | 6.97 |
| 107,307,507,907,1307,1507 | 1BHK | 31.19 | 7.54 | 7.54 |
| 108,308,508,908,1308,1508 | 1BHK | 31.19 | 7.54 | 7.54 |



WING A:

2nd, 4th, 6th, 8th, 10th, 12th & 14th FLOOR PLAN



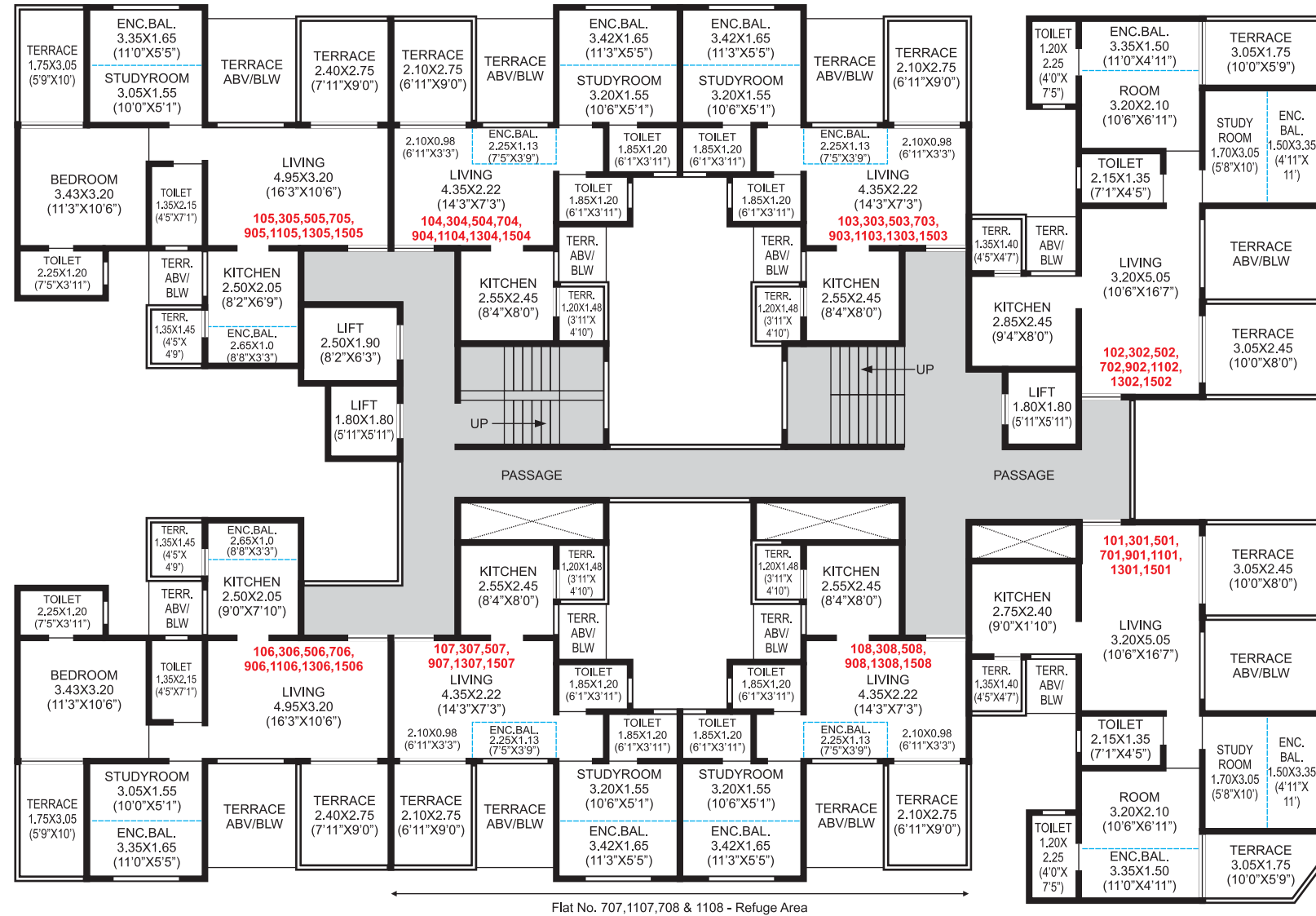
AREA STATEMENT IN SQ.M

| FLAT NO. | TYPE | CARPET | OPEN TERR. & SERVICE AREA | BALCONIES & VERANDHA |
|--------------------------------|------|--------|---------------------------|----------------------|
| 201,401,601,801,1001,1201,1401 | 2BHK | 45.41 | 9.36 | 8.7 |
| 202,402,602,802,1002,1202,1402 | 2BHK | 45.41 | 9.36 | 8.7 |
| 203,403,603,803,1003,1203,1403 | 1BHK | 31.79 | 7.54 | 7.4 |
| 204,404,604,804,1004,1204,1404 | 1BHK | 31.79 | 7.54 | 7.4 |
| 205,405,605,805,1005,1205,1405 | 2BHK | 47.00 | 8.55 | 7.34 |
| 206,406,606,806,1006,1206,1406 | 2BHK | 47.38 | 8.55 | 6.97 |
| 207,407,607,807,1007,1207,1407 | 1BHK | 31.79 | 7.54 | 7.4 |
| 208,408,608,808,1008,1208,1408 | 1BHK | 31.79 | 7.54 | 7.4 |



WING B:

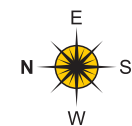
1st, 3rd, 5th, 7th, 9th, 11th, 13th & 15th FLOOR PLAN



Flat No. 707,1107,708 & 1108 - Refuge Area

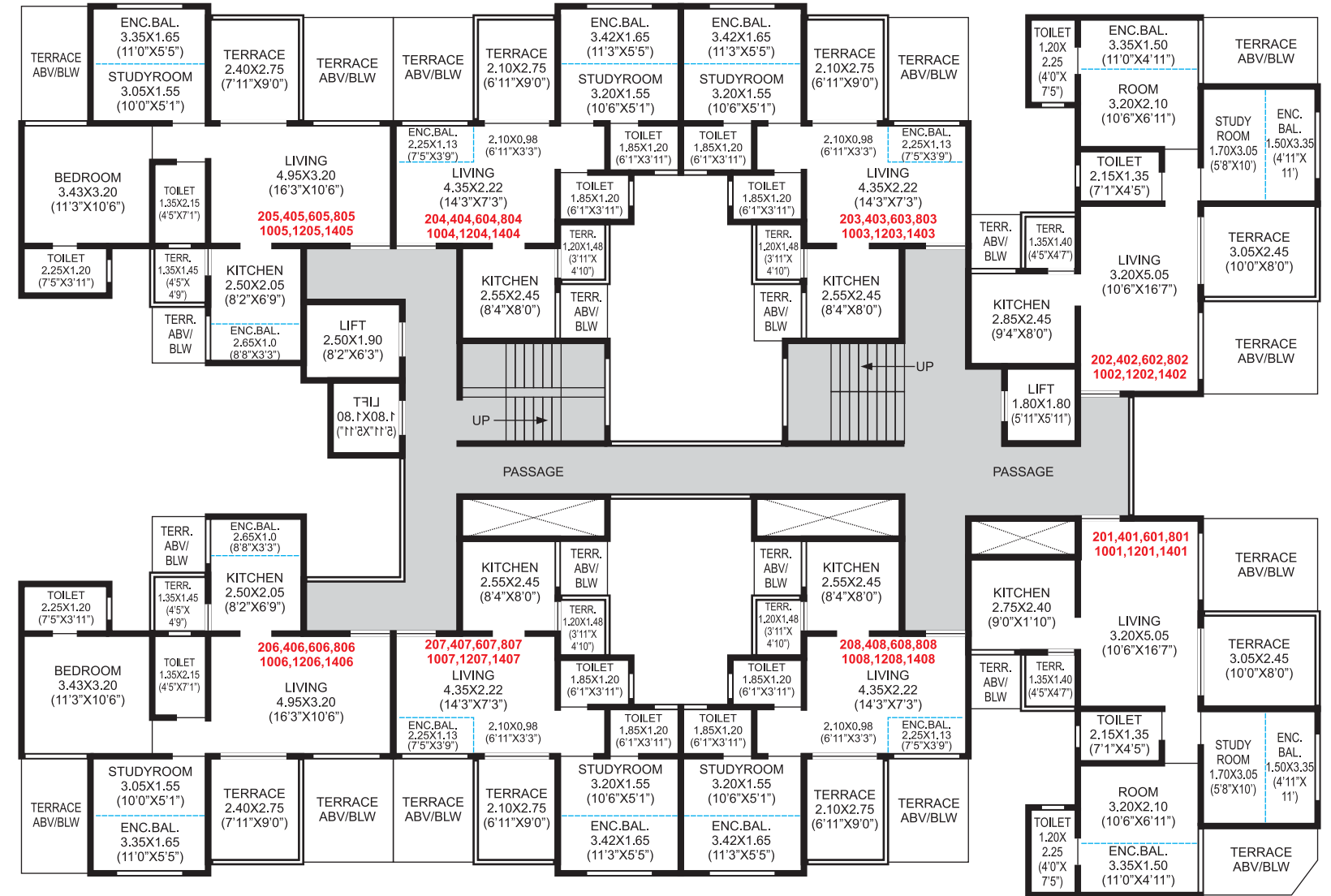
AREA STATEMENT IN SQ.M

| FLAT NO. | TYPE | CARPET | OPEN TERR. & SERVICE AREA | BALCONIES & VERANDHA |
|------------------------------------|------|--------|---------------------------|----------------------|
| 101,301,501,701,901,1101,1301,1501 | 2BHK | 45.23 | 14.41 | 8.7 |
| 102,302,502,702,902,1102,1302,1502 | 2BHK | 45.23 | 14.68 | 8.7 |
| 103,303,503,703,903,1103,1303,1503 | 1BHK | 31.19 | 7.54 | 7.54 |
| 104,304,504,704,904,1104,1304,1504 | 1BHK | 31.19 | 7.54 | 7.54 |
| 105,305,505,705,905,1105,1305,1505 | 2BHK | 46.89 | 13.87 | 7.34 |
| 106,306,506,706,906,1106,1306,1506 | 2BHK | 47.29 | 13.87 | 6.97 |
| 107,307,507,907,1107,1307,1507 | 1BHK | 31.19 | 7.54 | 7.54 |
| 108,308,508,908,1108,1308,1508 | 1BHK | 31.19 | 7.54 | 7.54 |



WING B:

2nd, 4th, 6th, 8th, 10th, 12th & 14th FLOOR PLAN



AREA STATEMENT IN SQ.M

| FLAT NO. | TYPE | CARPET | OPEN TERR. & SERVICE AREA | BALCONIES & VERANDHA |
|--------------------------------|------|--------|---------------------------|----------------------|
| 201,401,601,801,1001,1201,1401 | 2BHK | 45.41 | 9.36 | 8.7 |
| 202,402,602,802,1002,1202,1402 | 2BHK | 45.41 | 9.36 | 8.7 |
| 203,403,603,803,1003,1203,1403 | 1BHK | 31.79 | 7.54 | 7.4 |
| 204,404,604,804,1004,1204,1404 | 1BHK | 31.79 | 7.54 | 7.4 |
| 205,405,605,805,1005,1205,1405 | 2BHK | 47.00 | 8.55 | 7.34 |
| 206,406,606,806,1006,1206,1406 | 2BHK | 47.38 | 8.55 | 6.97 |
| 207,407,607,807,1007,1207,1407 | 1BHK | 31.79 | 7.54 | 7.4 |
| 208,408,608,808,1008,1208,1408 | 1BHK | 31.79 | 7.54 | 7.4 |

